

# Absenicon

The Center of Everything

---

The all-in-one display solution

Application Scene



Meeting Room



Boardroom



Auditorium



Lecture theater



Showroom



Home Theater

Absenicon Product Family

Corporate/ Education

Home Theater

Premium  
(COB  
Technology)



X Series



M Series

Mainstream  
(SMD Technology)



C Standard



C Slim



C Ultrawide

Value  
(SMD Technology)



E Series

Absenicon



## Absenicon X Series

Opening Up New Vistas

# Redefine Display Standards



## Large Format

136"/ 163" sizes

Immersive view



## Improved Clarity

Full flip-chip COB technology

Redefine image quality



## Easy-to-use

Intelligent functions and systems

Easy to install and maintenance



## Comfortable

Stay cool, enjoy more

Softer and uniform light

# Rediscover the World Through Absenicon X

Born for revolutionary visual experience, features the full flip-chip COB technology, Absenicon X series is an innovative all-in-one direct view screen.

**136"/ 163"**

big screen sizes

**600nits**

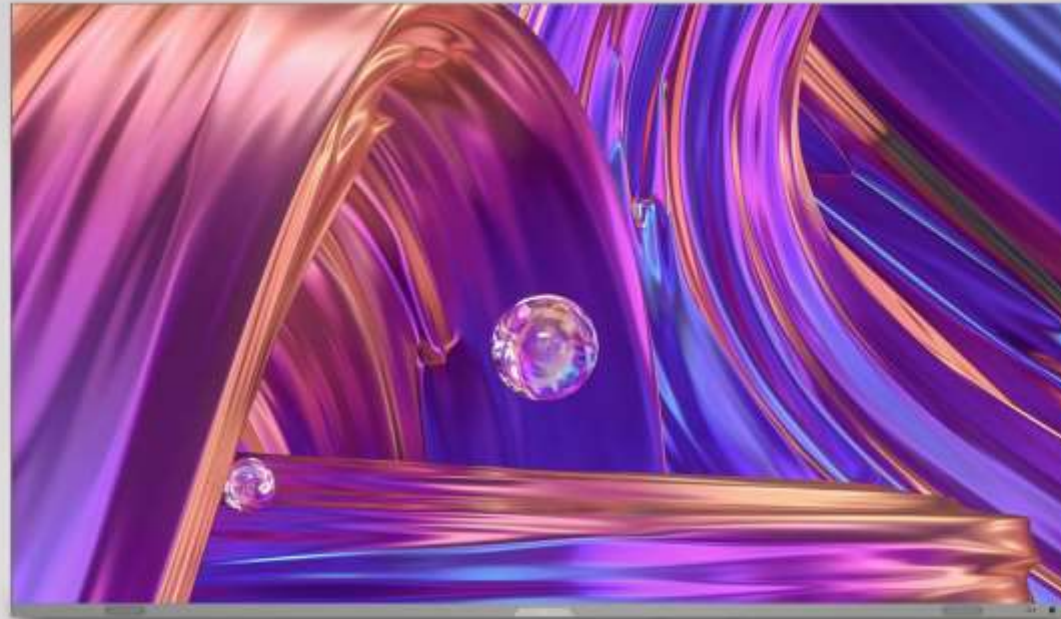
clear imagery under sunlight

**160°**

ultra-wide viewing angle

**COB Technology**

approved next-generation technology



# All-in-one Design with Delicate Details

Absenicon

The X series comes as a complete kit ready to install, including controller, audio, PSU and all necessary display elements needed for the installation. No need for complex wiring and debugging, easy to install and use. The design of lift type control box satisfies the 98% high screen ratio and the convenience of installation and maintenance

Signal antenna preposition



Lift type control box



2\*15w  
embedded audio



# Unrivaled Visual Experience

Absenicon

Integrating multiple Absen image optimization technology, the X series enhanced the clarity and visibility to bring out natural details and vivid colors for realistic and incredible images.



**15000:1**  
high contrast ratio



**90% BT2020**  
cinematic color gamut



**$\Delta E \leq 0.9$**   
color precision



**Full-screen calibration**  
perfect image consistency




综合画质有很大提升


画质效果





# The Purest Deep Black

The surface is covered with a black coating of polymer material, which brings amazing black consistency, bringing a deep and pure black, which improves the visual performance to an unprecedented level

 intense black immersion

 exceptional black consistency

 high flatness

 no glare and reflection

## A Non-Reflective Screen

Black Coating Technology

Full Flip-Chip Technology



avoid reflection and modularization

# Creating a Comfortable Experience

**Absenicon**



## Eye-caring

The non-glare surface light source brings softer and uniform light, relieving the eye fatigue experience when watching the screen for a long time



## Stay cool, enjoy more

Thanks to the flip-chip COB technology and Absen's HBB common cathode technology, the screen can always stay cool, diving into the fantastic visual world without breaking a sweat



## Mute operation

Operating noise is reduced to 25dB to ensure a comfortable experience

# Intelligent Writing Frees Your Imagination

Absenicon X series offers a choice of high-precision infrared touch system\*

**±1mm**

Touch accuracy

**20 point**

Multi-touch



Smart gestures



Single touch



Two point scaling



Multipoint movement



Hand erase



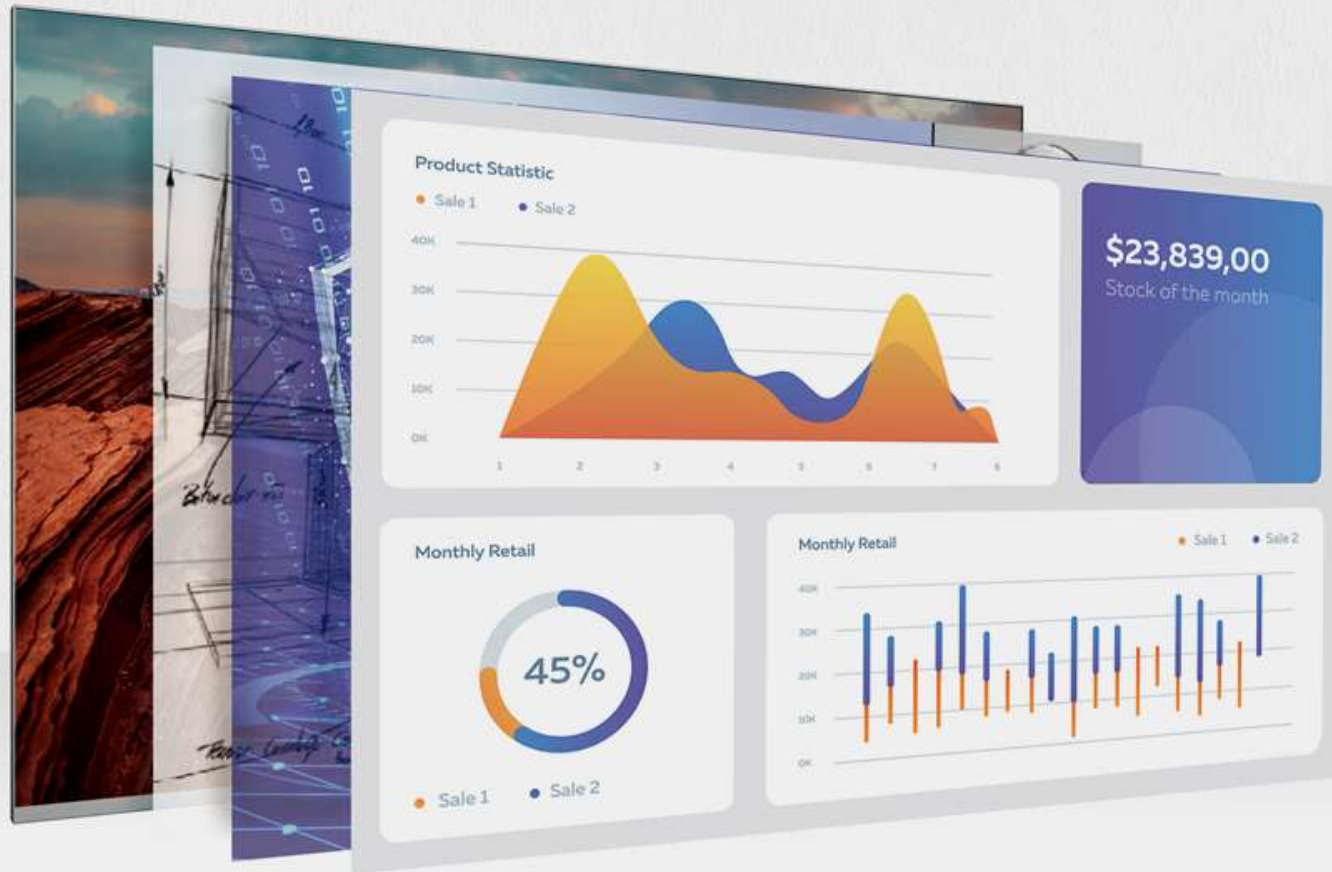
Set background



Select handwriting color and thickness

\*The infrared touch system is an optional solution.

# Remote Control for Easy Operation



# Compatible with AV Control Systems

Ethernet control protocols are provided for control systems such as Crestron and Extron making for easy integration which saves the system integrator both time and money with onsite programming.



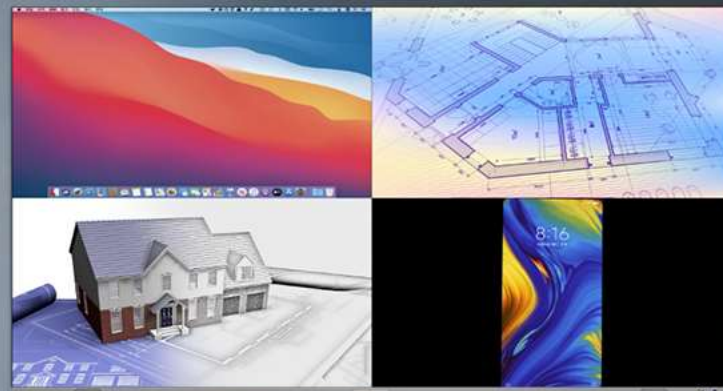
# Intelligent Wireless Screen-mirroring

Wireless screen mirroring from phones, computers and other devices

Use Transcreen to cast up to nine images from participants' devices for team review and collaboration

**NO need for**  
additional tools

**Perfect** for those quick  
collaboration meetings



**4-section**  
screen splitting

**Free annotation**  
on all pages



\* The above picture is reference effect, Absenicon X series supports up to 9 section screen splitting

# Intelligent System with Upgraded Performance

Comes with a standard Android 11.0 operating system; Windows\* operation system is available through an additional OPS computer. Ultra-large memory and powerful 4-core processor for smooth and fast performance

**11.0**

Android

**10**

Windows\*

**4-core**

Processor

**4GB+32GB**

Memory + Storage



\* Supporting for Windows system is optional.

# Strong Against External Impact

Absenicon

The panel-type COB encapsulation technology effectively protects the display from external impact



Water-resistant



Dust-resistant



Anti-collision



Anti-blue light



Anti-static



Anti-touch marks



Anti-oxidation



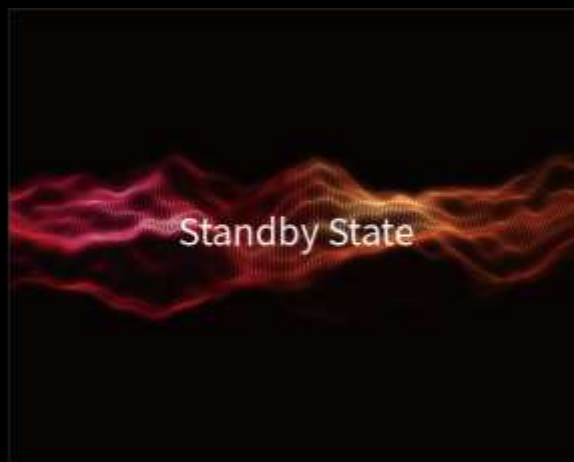


# Delicate Design, Less Consumption

40% energy saving is achieved by a combination of technological innovations, and adopted recyclable carton packaging design, practicing the “Absen Green” concept



**Dynamic Energy Management**  
dynamically adjust the output current



**Standby screen technology**  
standby mode power consumption  $\leq 0.5W$



**Eco-friendly Packaging**  
recyclable carton design



# Product Parameter

LED Type	X108	X136	X163
LED Type	Flip-chip COB	Flip-chip COB	Flip-chip COB
Diagonal Size (inches)	108"	136"	163"
Screen Dimensions (W x H)(mm)	2400*1350	3000*1687.5	3600*2025
Pixel Pitch(mm)	1.25	1.56	1.87
Screen Resolution (dots)	1920*1080	1920*1080	1920*1080
Brightness (nit)	600	600	600
Contrast Ratio	15000:1	15000:1	15000:1
Processing Depth (bit)	14	13	14
Refresh Rate (Hz)	3840	3840	3840
Viewing Angle (Horizontal/Vertical) (°)	160/160	160/160	160/160
Ave./Max. Power Consumption (W)	325/975	567/1701	790/2369
Touch Option	±1mm touch accuracy, 20 simultaneous touch points		
Android System	Android 11.0		
Processor Core	Main frequency 1.8G 64-bit quad-core processor		
Storage	4GB+32GB		
Control Interface	RJ45*1, RS232		
Input/output Interface	HDMI1.3 IN*1, HDMI1.3 OUT*1, USB2.0*1, USB3.0*3, Audio OUT*1, SPDIF OUT*1, RJ45*1, RS232		
Windows System	Optional		
IP Rating(Front/Rear)	IP40/IP21		

# Thank You

---



Twitter: @LEDAbsen      Facebook: @LEDAbsen

LinkedIn: Absen      Instagram: absenled