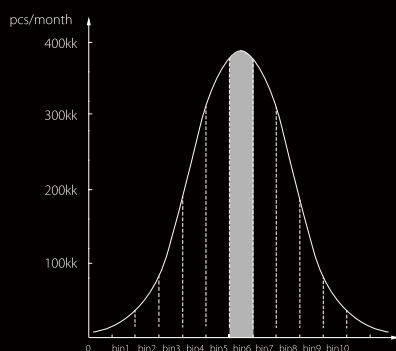
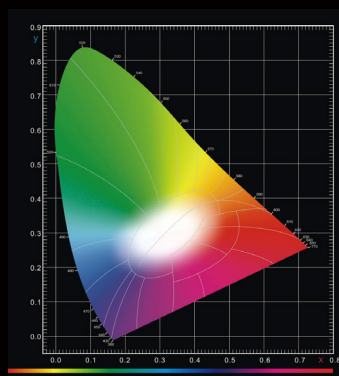




## Core technology

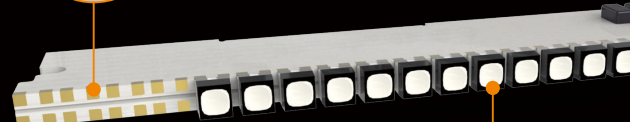
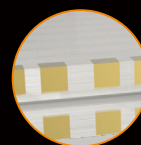


Monthly output of this model is greater than 400K. Lamps are selected from the same bin and batch to ensure consistency of brightness and color.

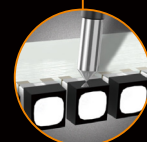
Deep processing of the LED pad

## 3D patch design

Each pad on the PCB is processed 8 times with a groundbreaking 3D patch technology in order to ensure that the PCB is firmly welded to the LED.



The welding between each LED and pad enables it to bear an impact thrust of above 40N



## Superior quality LEDs



High brightness



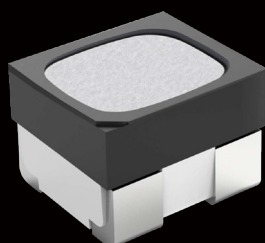
Consistency



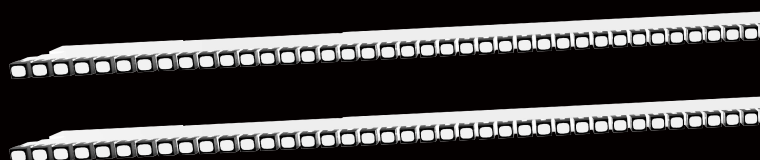
UV resistance



Long service life



## SMD1515

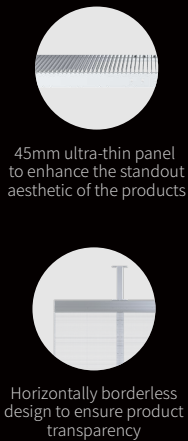
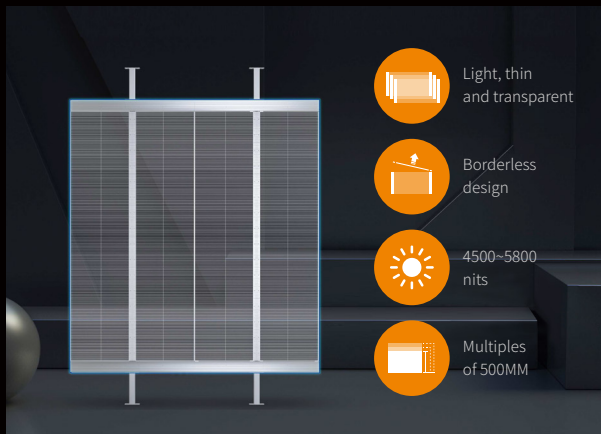


H=7.8 mm

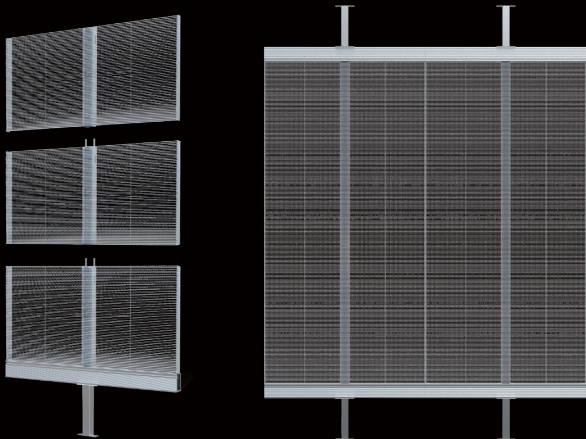
$$\frac{H-1.6}{H} = 79.4\% \text{ Transparency}$$



# Light and thin panel with advanced techniques One-of-a-kind visual experience



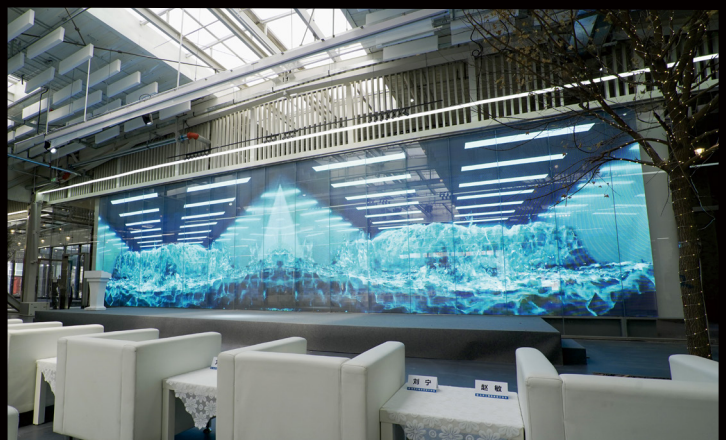
## Panels are assembled for a fast and easy installation



## Product parameters

Product	JD3.9-T (side-patched & borderless)
LED	SMD
Pixel pitch (mm)	3.9(H)/7.8(V)
Brightness (nit)	5000
Transparency	80%
Panel size (W*H*D) (mm)	1000x500x100
Panel weight (Kg)	5.5
Refresh frequency (Hz)	≥2880
Grayscale (Bit)	16
Visual angle (horizontal/vertical) (°)	160/160
Power (maximum/average) (W/m <sup>2</sup> )	800/267
IP Rating (front/rear)	IP30
Certification	CE/FCC/CCC

## Application Widely applicable to glass window advertising in various retail shops



### Absen Optoelectronic Co.,Ltd

Address: 18-20F Building 3A, Cloud Park, Bantian Huawei Base,  
Longgang District Shenzhen, 518129, P.R.China TEL: +86-755-89747399  
FAX: +86-755-89747599 E-mail: absen@absen.com Website: www.absen.com



Twitter: @LEDAbsen Facebook: @LEDAbsen  
LinkedIn: Absen Instagram: absenled